



YOUR PARTNER FOR

OPTIMAL WORKPLACE SOLUTIONS

NEW

ergolastec[®]
MIT RFLX TECHNOLOGY

moovetec[®]

ergopurtec[®]





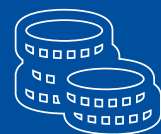
KRAIBURG Austria



334
More than 341
employees



>60
more than 60 years of
experience



87,7 Mio
Turnover of € 87,7million
in 2023

In-house research and development

As the most important raw material, the rubber compound plays a key role in the durability and dimensional stability of AGR-certified ERGOLASTEC® floor protection mats. With over 60 years of experience in rubber expertise, our research and development team makes no compromises when selecting raw materials. In addition to many years of compounding expertise, customised and individual development also plays a decisive role here. Customer proximity motivates our team to continuously optimise our quality mats - for optimal and healthy standing, walking and turning behaviour for employees.



KRAIBURG Group

KRAIBURG was founded in 1947 as a family business that was already specialising in rubber at the time. KRAIBURG Holding SE & Co. KG, based in Waldkraiburg/Upper Bavaria, was founded in 2005. It manages around 2500 employees who are active in nine strategic business areas.

In addition to traditional products such as technical rubber compounds and rubber for tyre retreading, the divisions of the KRAIBURG Group manufacture a wide range of rubber products. KRAIBURG has also developed into a leading global supplier in the Thermoplastic Elastomers (TPE) division.



Made in Austria

All mixing and manufacturing processes for the ERGOLASTEC® industrial mats and their production take place exclusively at our headquarters in Geretsberg, Upper Austria. Customer proximity is very important to us. This is why our sales department and our dealer network also operate decentrally from many locations to quickly and personally respond to your individual needs and special challenges.

- **More than 70 years of expertise in manufacturing and processing high-quality and special rubber materials.**
- **Experts in workplace ergonomics**
- **High level of expertise in developing optimal rubber compounds, highly efficient tyre treads, and mat surface geometries.**
- **Europe-wide, customer-oriented sales and comprehensive consulting and services**
- **Reduced noise emission**



Your demands – our standard

On 1 June 2007, the new EU Chemicals Regulation No. 1907/2006 on the Registration, Evaluation, Authorisation, and Restriction of Chemicals (REACH) came into effect. KRAIBURG understands its REACH obligations and is involved through the Austrian Chamber of Commerce (WKO) and the German Rubber Industry Association (wdk). For „substances of very high concern“ (SVHC substances), REACH stipulates an information obligation if such an SVHC substance is present in concentrations higher than 0.1 percent by weight in the preparation or in the product.

The products made by Kraiburg Austria GmbH & Co. KG do not contain any of these substances.



Laying tips

1. Lay mats on the base
2. Spray the jig-saw puzzle ends with soapy water
3. Fit mats together like a jig-saw puzzle using a rubber mallet
4. Make adjustments on site (e.g., around the feet of workbenches): The rubber mats can be cut easily with a knife.

The ideal solution for more flexibility in the workplace

- Requirement is a fixed surface, such as concrete / screed, resin floor, asphalt, tile, etc.
- The surface must be even, clean and smooth
- The mats must be stored between +5°C and max. +30°C before they are laid.



Individual advice

The KRAIBURG MATTING SYSTEMS team offers you a **comprehensive consulting and customer service**. Whether on-site consultation, by email or on the phone, our team is always at your disposal. Customer proximity is particularly important to us, so we offer the following services especially on site:

- Measurement and laying service
- After-Sales-Service

Just contact us, we look forward to your inquiry!



Video ERGOLASTEC®
Floor protection mats
& installation service



Cleaning recommendation

1. **FIRST CLEANING/CARE:** To prolong the life, a suitable wiping care agent can be applied evenly in a wet-wiping process after the first cleaning. The dry wiping care agent film can be polished** using a suitable polishing pad.
2. **MAINTENANCE CLEANING/CARE (BY MACHINE):** Optimum cleaning results can be achieved by vacuum scouring using an active or micro-fibre pad or a red pad* with a suitable wiping care agent. Wipe and pick up dust using suitable micro-fibre wipes, mop fleeces or prepared dust-collecting cloths. To maintain a coherent and visually attractive surface appearance, it is recommended to polish** with a suitable polishing pad as required. Adhering, water-soluble or emulgatable contaminations are removed by wiping wet.
3. **INTERMEDIATE CLEANING** (used on the VARIO and VARIO^{ESD} workplace mat): To remove footprints and heel marks and to maintain a coherent and visually attractive surface appearance, it is recommended to clean as required with a suitable wiping care agent using a suitable polishing pad.
4. **INTENSIVE CLEANING:** Wet scouring using an active or micro-fibre pad or a red pad and a suitable cleaning agent. Since water-soluble wiping care agents are recommended, the use of basic cleaners is not usually necessary. After sucking off surface dirt with a wet vacuum cleaner, apply a care agent as during first cleaning.

Basic instructions:

- Please observe the instructions in the product and safety data sheets of the used cleaning and care agents.
- Please contact the MATTING-SYSTEMS team if you have any questions

** Use a single-disc polisher with rotation speeds between 1,000 – 1,500 rpm.

Certifications

- AGR Certifications
- Qualitative test to determine antibacterial efficacy
- Fire behaviour
- ESD



*Download area Certifications

Dimensional stability even under extreme conditions

- Oil resistance
- Resistance to chippings
- Stable connection of the jig-saw puzzle system
- Temperature resistance (-35°C to +95°C)
- Firm lay
- Slip safety



Video ERGOLASTEC® floor protection mat and the use of chips



Video Fire behaviour of the ERGOLASTEC® workplace mats

Why the right mat makes all the difference

Workplace mat in the test

- **rotation-friendly + non-slip**
- **ergonomics + work safety**



Video Ergonomic workstation mat in test

How flame-retardant workplace mats avoid fires

Flying sparks which occur during work such as welding, cutting or grinding constitute a considerable fire risk. They can reach temperatures of several thousand degrees Celsius and ignite highly inflammable material in just a few seconds. Because of their extreme heat, it is extremely important to take suitable safety precautions. One measure are fire-resistant workplace mats with the European Fire Protection Class certification EN13501-1. If a spark from a machine hits a "highly flame-retardant" workplace mat with the classification Bfl-s1*, the flames will be smothered immediately and the development of smoke prevented.

Electrostatic discharges also pose a threat to persons. ESD workplace mats of the ERGOLASTEC® brand give flying sparks no chance. ERGOLASTEC® ESD, ERGOLASTEC® Oil, ERGOLASTEC® Vario^{ESD}.

In cooperation with the Geschenkschmiede Bernhofer company in Austria, the behaviour of the flame-resistant ERGOLASTEC® fire workplace mats from KRAIBURG MATTING SYSTEMS was tested under high temperatures (1,025 °C). The results were impressive; see for yourselves and scan the QR code.

ergolastec®
the workplace mat


**ERGONOMIC
ROTATION FRIENDLY
LONG LASTING**

Durability through quality

Without exception, our ERGOLASTEC® industrial mats stand for the highest standards in quality and safety. As the most important raw material, the rubber compound plays an essential role in achieving the longevity and dimensional stability of ERGOLASTEC® mats. With our experience spanning more than 70 years of rubber competence, our research and development team makes no compromises in the selection of raw materials.



Multi-purpose workplace mat



The mat resistant to oil, grease and gasoline



Customized workplace mat



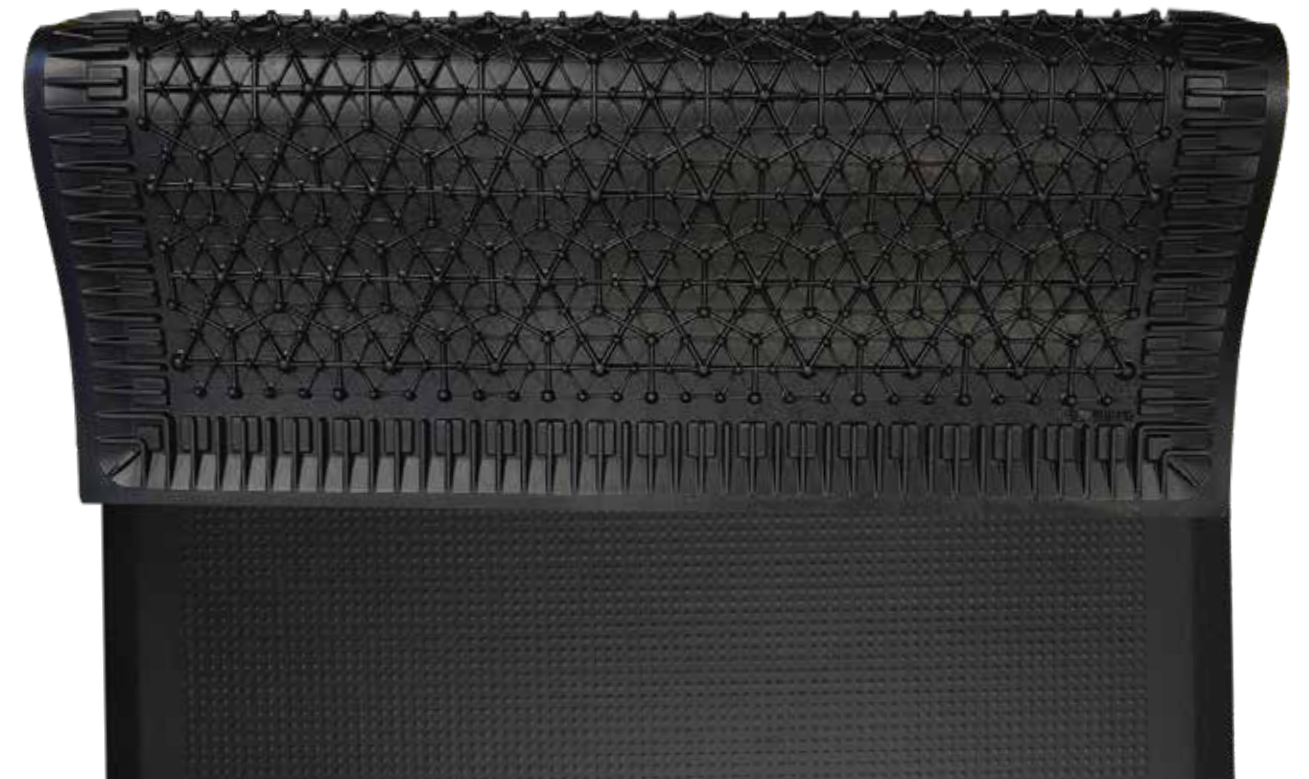
Electrically conductive industrial mat



Flame-retardant mat Bfl-s1



Antibacterial workplace



The technical advantages of the ERGOLASTEC® rubber mat

Our customers choose the ERGOLASTEC® industrial mat according to the criteria that are most important to them. With our high-quality mats, we have developed a product that meets all demands placed on ergonomic workplaces:

- Functional and user-friendly surface and underside designs
- High durability and robustness through high quality KRAIBURG mixtures
- Absolute reliability: oil, acid, and base resistance
- Combinable mat format: flexible connection solutions for individual requirements
- Precise and closely interlocked puzzle system for sustainable, secure fixation
- Very good slip resistance: Average mat weight of approx. 19 kg
- Guaranteed solid foothold and non-skid property (outer edges bevelled 20°)
- Excellent dimensional stability in cold, hot, and wet conditions (temperature resistance -25°C to +95°C)
- Excellent tear propagation properties
- Reduced noise emission



AGR-certified workout ground

The secret to our back-protecting rubber mat lies in the interplay of **special geometric sides (surface and back) that stimulate continuous compensation movements**. This means that the anti-fatigue mats are developed in such a way that the body naturally oscillates and the leg and calf muscles thereby permanently remain slightly in motion. **This reduces the one-sided pressure on the inter-vertebral discs and ensures a balanced load on the back musculature.** The spine is stabilised.

Further information
on the topic



20,6 %
of all days of incapacity
for work (AU) in 2023 were
Muscular and skeletal disorders

=

9,5 days
per case of illness due to
back pain per year.

Source: BKK-Gesundheitsreport 2024

ergolastec[®]
MIT RFLX TECHNOLOGY

RFLX
THE DYNAMIC BASE

THE SUCCESS FACTORS OF RFLX DYNAMIC BASE



**MOVEMENT INSTEAD OF STRAIN
THROUGH NATURAL MICRO-
MOVEMENT**
Activates Muscles & Reduces Fatigue



**MAXIMUM STABILITY AND FLEXIBILITY
THROUGH MULTI-CONTACT POINTS**
For a Secure Stance & Perfect Grip



**JOINT-FRIENDLY STANDING THROUGH
ADAPTIVE GEOMETRY**
Intelligent Pressure Distribution for
Relaxed Knee Joints



**EXCEPTIONAL DURABILITY THROUGH
OPTIMIZED RUBBER COMPOUND**
Designed for Maximum Load and Rotational
Movement in the Workplace

NEW

WHAT'S BEHIND BIONIC TECHNOLOGY?

Developed by KRAIBURG Austria's in-house research department, the **RFLX DYNAMIC BASE** underside combines the ingenious surface structure of the water lily with the functional efficiency of the honey-comb structure.

An **ergonomic masterpiece** that merges nature and technology, redefining the future of standing and walking workstations in industrial environments.

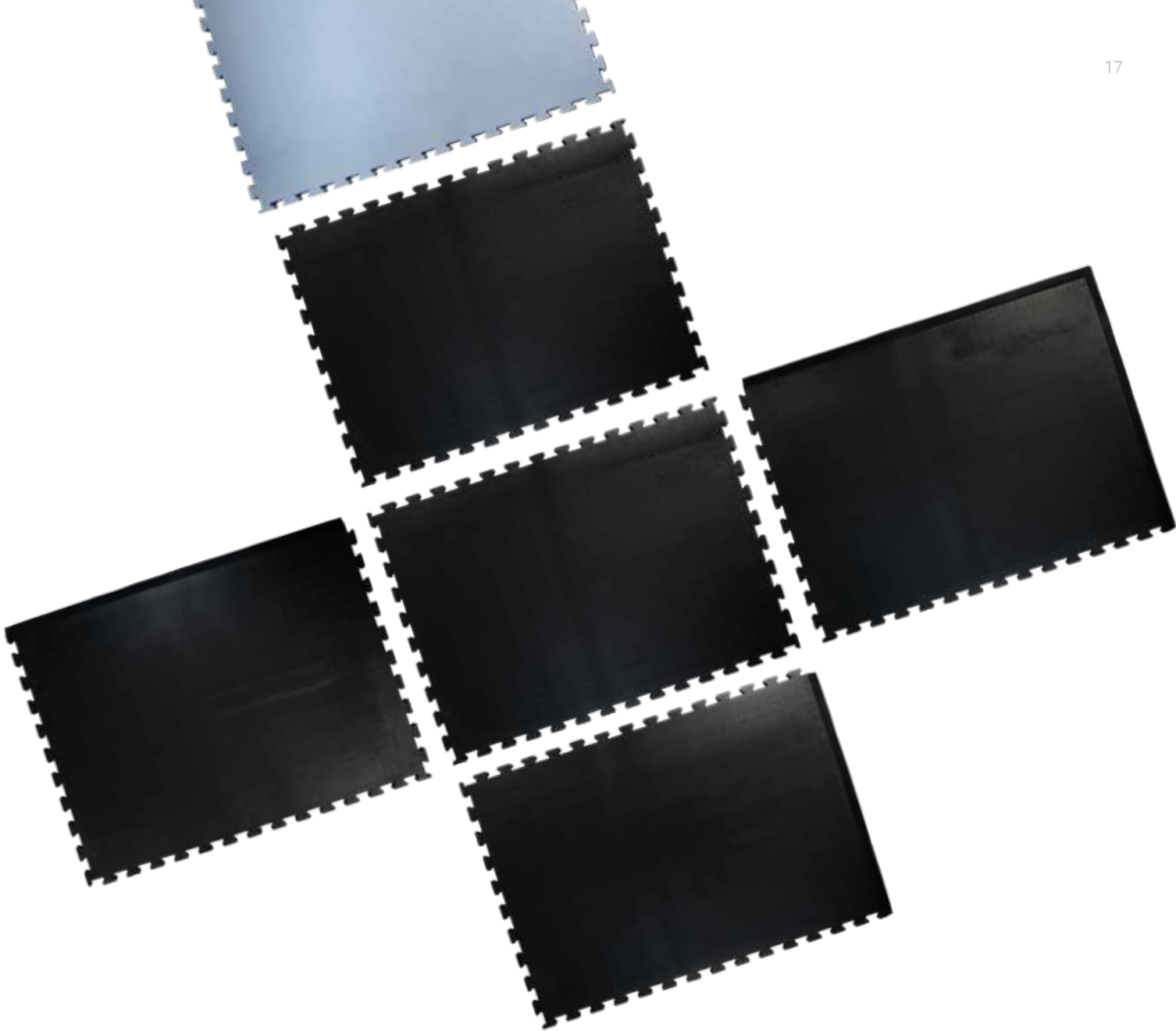
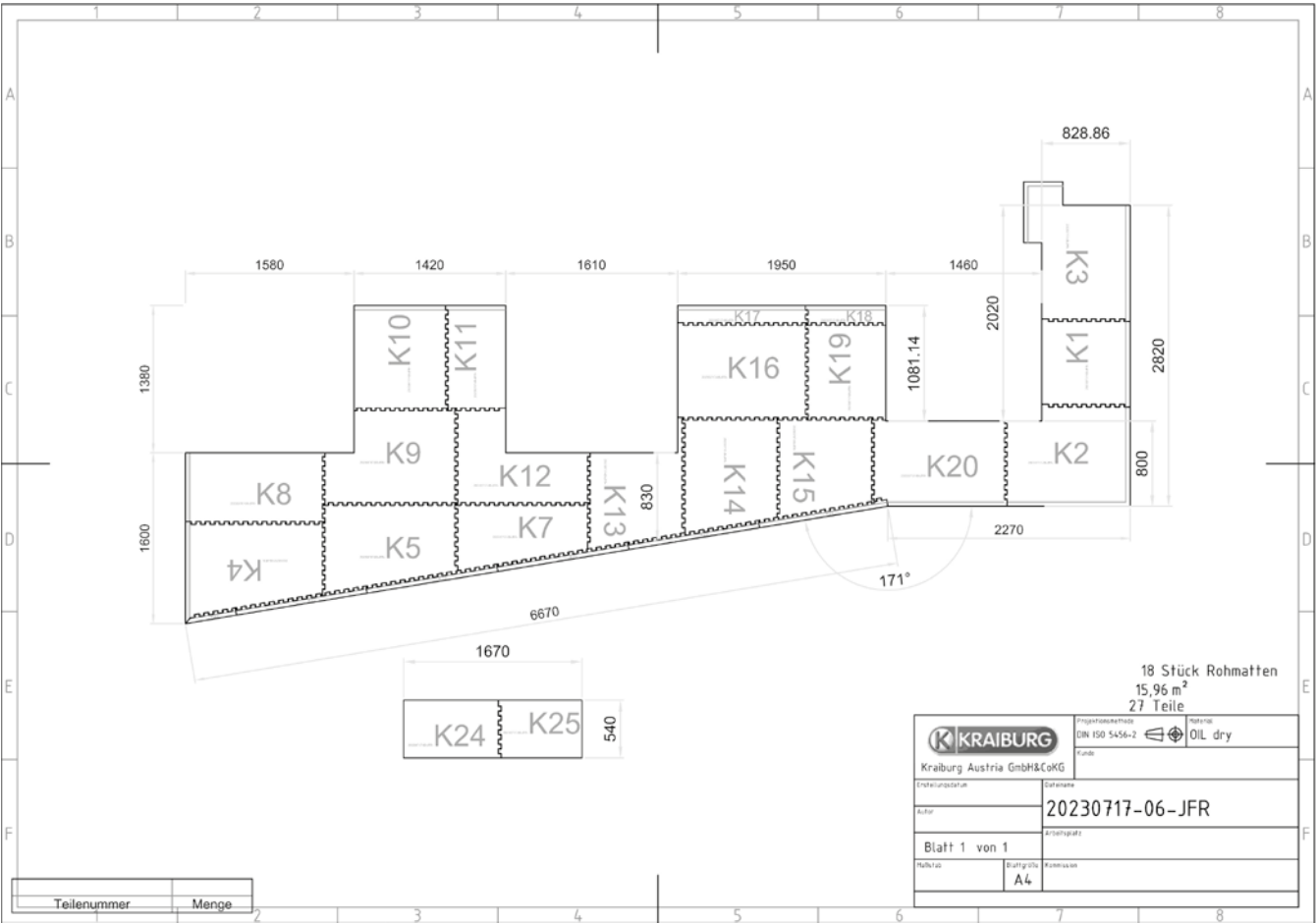
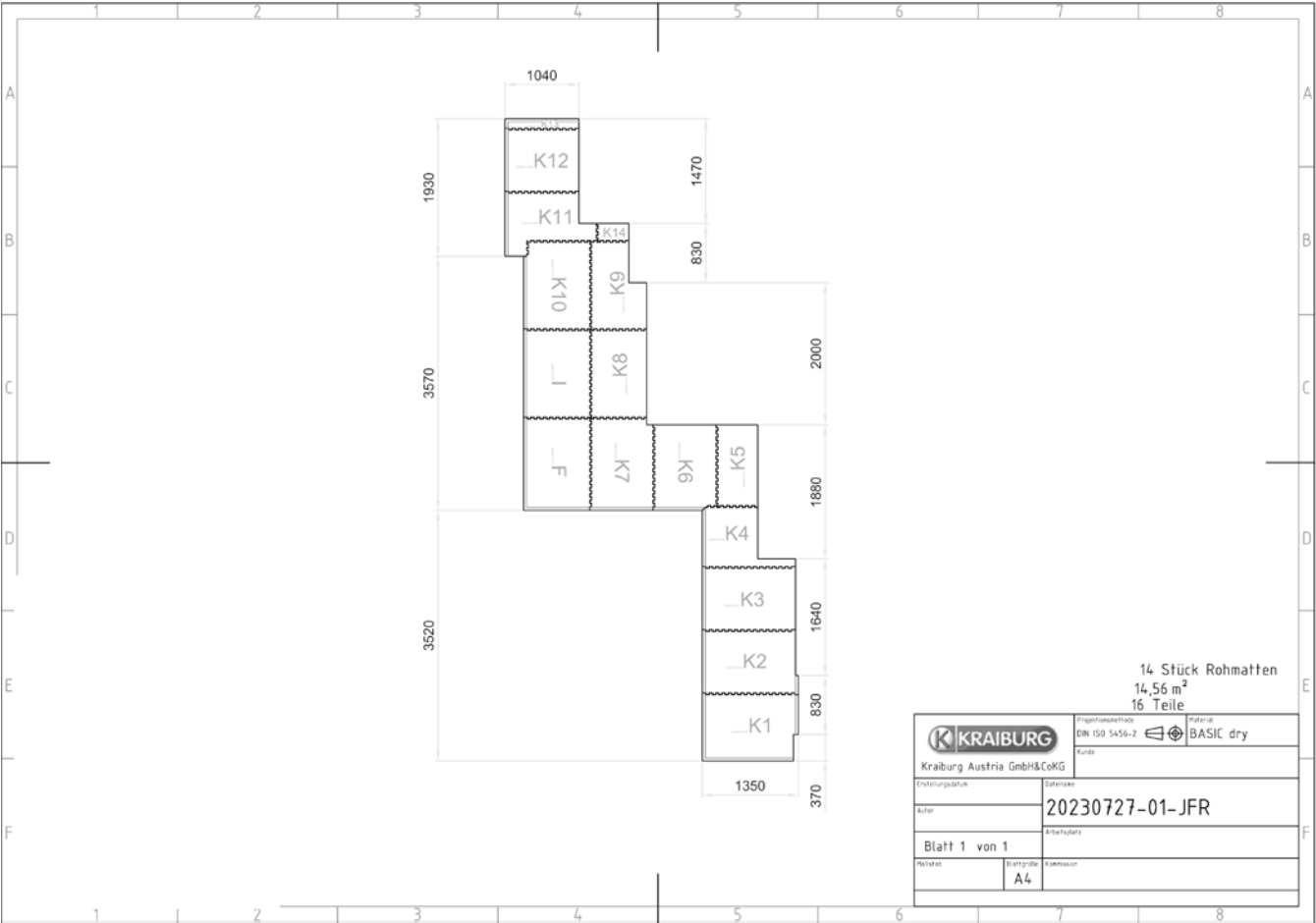
TRY IT FOR FREE NOW

WWW.MATTING-SYSTEMS.AT



CAD-planned workplaces

High-precision workplace: Our CAD-drawn workplaces provide optimum efficiency and design. Experience the future of workplace planning, well thought out down to the finest detail.



Tailor-made workplaces

Benefit from our **flexible interlocking system for application-oriented individual solutions**: based on the exact dimensions, we design your workplace according to the precise KRAIBURG standards. Our ERGOLASTEC® team offers you the **necessary advice** for your tailor-made rubber mats as well as an **installation service**. Just get in touch. **Your challenge is our motivation!**



Video Customised
Workplace mats from
ERGOLASTEC®



the floor protection mat



**ROBUST
ROTATION
FRIENDLY
PASSABLE**

Solutions for all challenges

We offer flooring solutions for floor and impact protection, noise damping, cutting resistance and trafficability issues as well as many other requirements.

Another advantage of MOOVETEC® is its combinability with the ERGOLASTEC® workplace mats.

Only the best live long

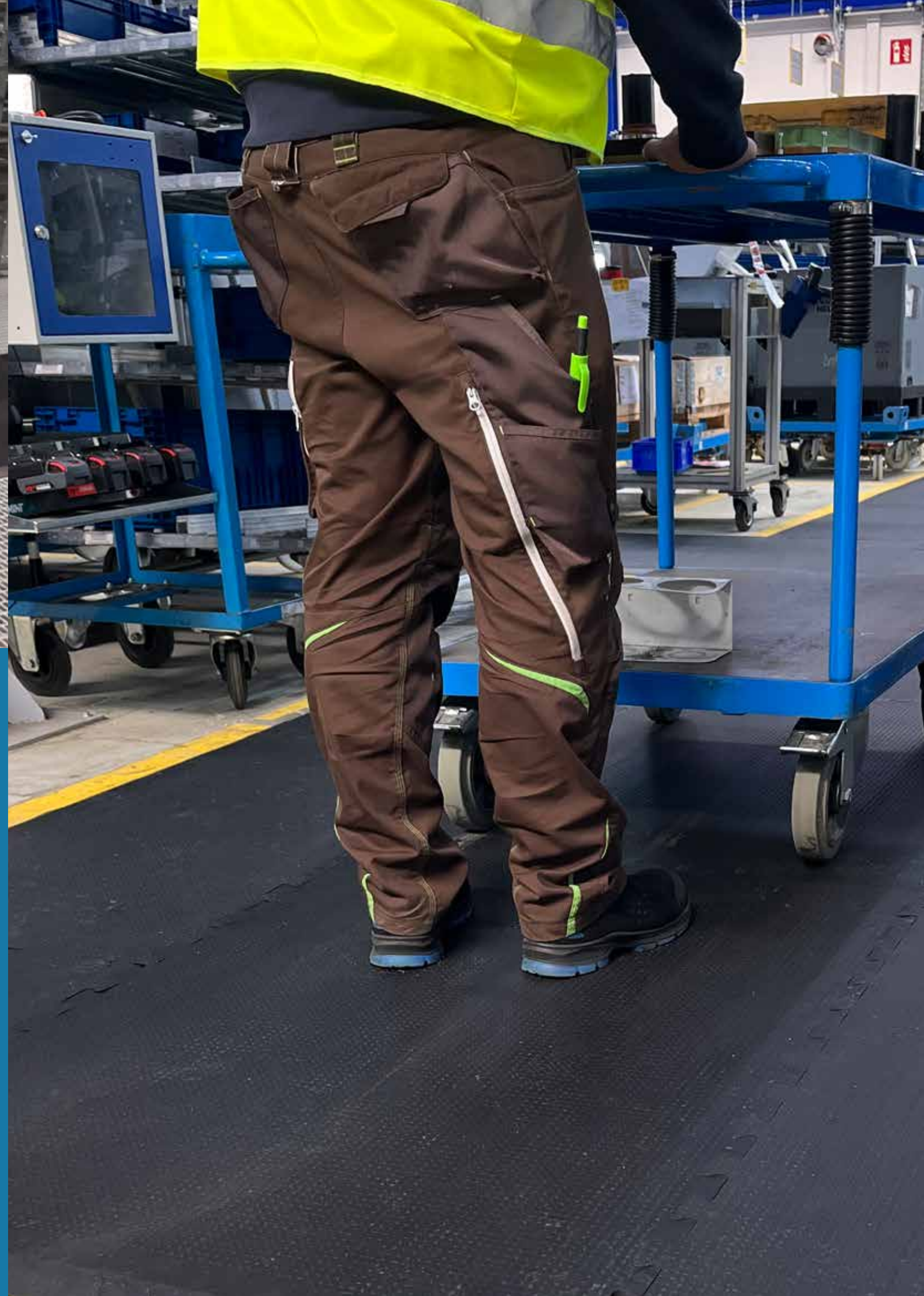
Our MOOVETEC® flooring solutions stand exclusively for the highest standards in quality, longevity and optimum protection for your floor. With their experience from more than 70 years of competence in rubber, our research and development team therefore makes no compromises in their choice of raw materials.

FLOORING SOLUTIONS

Different properties for individual requirements

- flame-retardant
- noise-damping
- trafficable
- puzzle system solution
- heat insulation





Selection & load in comparison



versatile



flame-retardant floor protection mat



universal/ combinable



robust & sustainable



Forklift



Electric pallet truck



Hand pallet truck



Order picking trolley

ergopurtec®

the lightweight workplace mat



**LIGHTWEIGHT
ROTATION FRIENDLY
HEAT INSULATING**

Solutions for dry application areas

The durable polyurethane material allows the mats to be used at production, warehouse, assembly and packing workstations as well as at processing machines and workbenches.

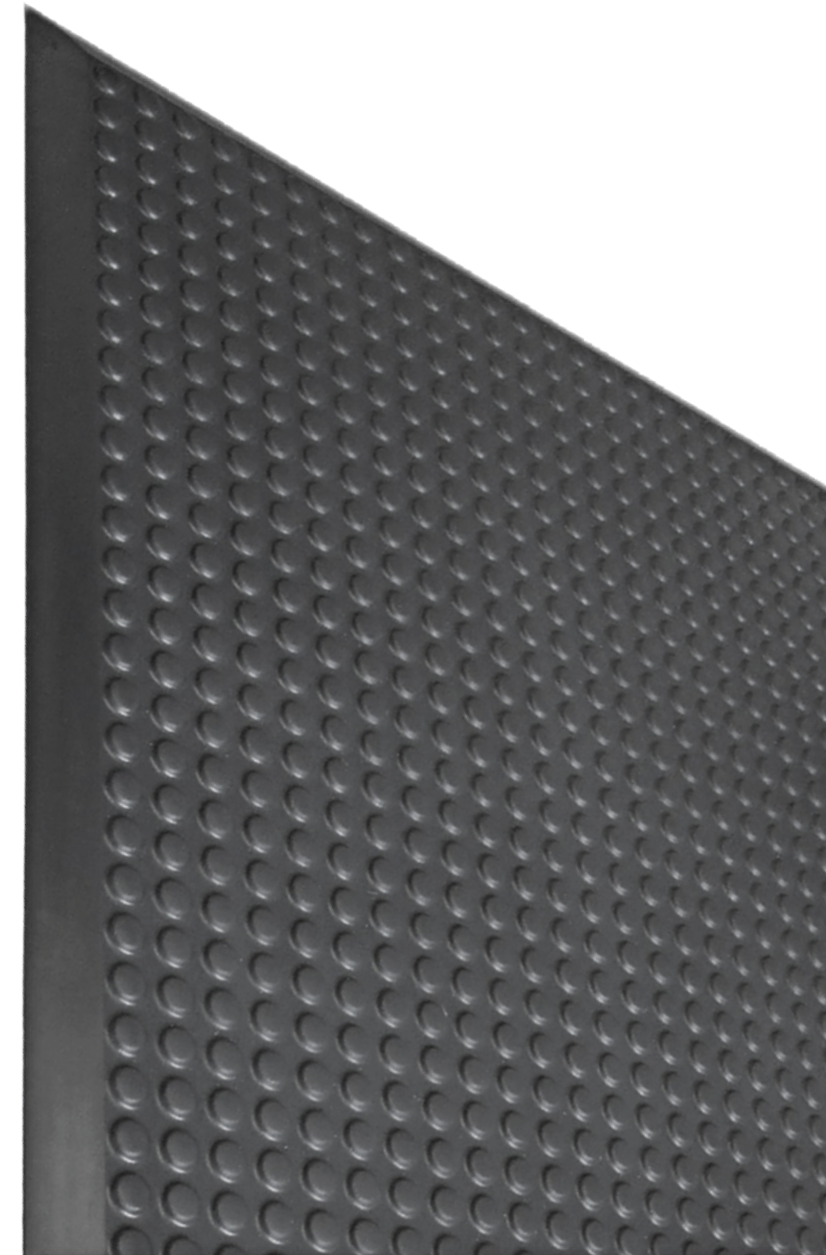
Prevention of risks

The use of floor protection mats promotes dynamic muscle work at walking and standing workplaces. The continuous muscular movements stimulate the blood circulation and ensure the supply of oxygen to the muscles. The dynamic muscle work due to the workplace mats therefore reduces the risks of musculoskeletal disorders (MSD).

The workplace mat material also provides protection against unhealthy floor cold.

The technical ADVANTAGES of the ERGOPURTEC® workplace mat

- The anti-fatigue mats are cold-insulating, vibration-damping, anti-slip and easy-care
- ERGOPURTEC® mats are resistant to oils, solvents and many chemicals
- The ERGOPURTEC® series features high turning mobility
- The closed-cell surface makes the anti-fatigue mat easy to clean
- The long-lasting bonded seam enables safe workplace design
- ERGOPURTEC® is a lightweight mat made of foamed PU material that can be easily removed from the workplace and replaced, for example for cleaning work.





Workplace mats = training ground for top-performing staff

1. Activation of the muscle pump
2. Dynamisation of the leg muscles
3. Prevention of muscle cramps
4. Promotes the circulation of tissue fluids
5. Reduction of fatigue signs
6. Adequate pressure relief
7. Reduction of joint and back problems
8. Insulation against cold floors
9. Shock-absorbing effect when standing and walking



Laying tips

1. The prerequisite is a suitably firm base such as concrete/screed, synthetic resin, asphalt, tiles, etc.
2. The base must be level, clean and smooth

Cleaning recommendation

- Sweeping
- Vacuuming
- Wet cleaning with a mild cleaning agent (pH value 5-9)

If liquid gets onto the underside of the mat during cleaning, it must be turned over and laid out to dry until the underside of the mat is completely dry.

High-pressure cleaning is not recommended!

Our product portfolio at KRAIBURG Matting Systems

Ask your field sales consultant for information or
simply visit www.MATTING-SYSTEMS.at



ergolastec®

the workplace mat

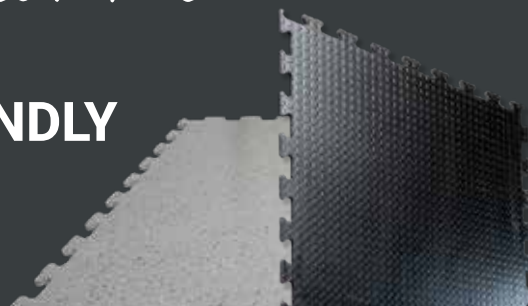
**ERGONOMIC
ROTATION FRIENDLY
LONG LASTING**



moovetec®

the floor protection mat

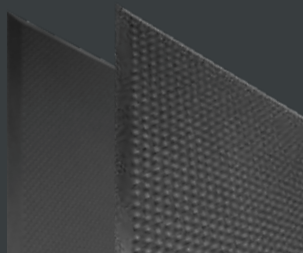
**ROBUST
ROTATION FRIENDLY
TRAFFICABLE**



ergopurtec®

the lightweight workplace mat

**LIGHTWEIGHT
ROTATION FRIENDLY
HEAT INSULATING**



KRAIBURG Austria GmbH & Co. KG
MATTING SYSTEMS

Webersdorf 11, 5132 Geretsberg, Österreich
Tel.: +43 (0)7748 7241-0
Fax: +43 (0)7748 7241-400
ergolastec@kraiburg.at


made in AUSTRIA