



TRESTON

DEDICATED TO HUMAN WORKSPACE

Storage SYSTEMS

PRODUCT CATALOGUE 2019





Small-parts storage cabinets

4-5



Spacemisers for small-parts storage cabinets

6



Cabinet trolleys for small-parts storage cabinets

7



Storage bin cabinets

8



Spacemisers for storage bin cabinets

9



High density storage cabinets

10-11



Storage bins

11



Shelf bins

12-13



Stacking bins

14-15



Transparent shelf and stacking bins

16-17



Stacking bin trolleys and racks

18-19



ESD protective storage systems

20-27

Small-parts storage cabinets: series 550

Designed in Finland, our small-parts storage cabinets meet the requirements of demanding professional use in industrial facilities, stores, workshops, warehouses, hospitals, pharmacies and schools.

The design of our storage cabinets is timeless and durable. With a frame in a stylish charcoal finish and drawers made of a crystal clear material, their simplified colour scheme fits in with a range of applications. Small-parts storage cabinets have been designed to withstand normal use and transport. Items that are used regularly are easily accessible in these cabinets which can be kept on tabletops, mounted on walls using screws, and stacked on turntables or cabinet stands.

Good organisation is a vital element in efficient small parts storage and is easily attainable using series 550 and 290 cabinets.

Series 550

The series features seven different cabinets with a height of 550 mm. This series comes with a grey frame (RAL7016), crystal clear drawers and self-adhesive labels. The design combines the use of a strong polypropylene (PP) frame, shelves made of galvanised steel and drawers made of clear polystyrene (PS). The back of the cabinets feature ready-made holes for wall mounting. Details on the drawers can be found on page 17. Cross and length dividers are available as an accessory.

Width: 310 mm
Depth: 180 mm
Height: 550 mm



Series 550

Includes drawers of type (quantity/drawer)	L-00 (60 pcs)	L-01 (48 pcs)	L-02 (24 pcs)	L-04 (24 pcs)	L-06 (8 pcs)	L-07 (12 pcs)	L-01 (24 pcs) L-04 (6 pcs) L-06 (2 pcs)
Cross dividers, ordered separately (quantity/drawer)	V-00 (5 pcs)	V-01 (5 pcs)	V-02 (5 pcs)	V-04 (5 pcs)	V-06 (5 pcs)	V-07 (5 pcs)	V-01 (5 pcs) V-04 (5 pcs) V-06 (5 pcs)
Length dividers, ordered separately (quantity/drawer)	-	V-012 (1 pcs)	V-012 (3 pcs)	V-0456 (1 pcs)	V-0456 (5 pcs)	V-078 (3 pcs)	V-012 (1 pcs) V-0456 (1 pcs) V-0456 (5 pcs)
Code	550-3	551-3	552-3	554-3	556-3	557-3	550C-3

Small-parts storage cabinets: series 290

Series 550 is supplemented by series 290, which is only half the size of 550. These cabinets can be wall hung or mounted on bench top turntables, or stood on the work top.

Series 290

This series comes with a grey frame (RAL7016), crystal clear small drawers and self-adhesive labels. The design combines the use of a strong polypropylene frame, shelves made of galvanised steel and drawers made of clear polystyrene. The back of the cabinets feature ready-made holes for wall mounting. Cross and length dividers are available as an accessory.

Width: 310 mm
Depth: 180 mm
Height: 290 mm



Benefits of small parts drawers

- These crystal clear drawers are transparent, allowing easy visual identification of products.
- Each drawer has a corrugated base to make picking things up easier.
- Self-adhesive labels for product identification are included as standard.
- Cross and length dividers are available as an accessory.
- Cabinet dimensions can be found on page 17.



Series 290

Includes drawers of type (quantity/drawer)	L-00 (30 pcs)	L-01 (24 pcs)	L-02 (12 pcs)	L-04 (12 pcs)	L-06 (4 pcs)	L-07 (6 pcs)	L-01 (12 pcs) L-04 (3 pcs) L-06 (1 pcs)
Cross dividers, ordered separately (quantity/drawer)	V-00 (5 pcs)	V-01 (5 pcs)	V-02 (5 pcs)	V-04 (5 pcs)	V-06 (5 pcs)	V-07 (5 pcs)	V-01 (5 pcs) V-04 (5 pcs) V-06 (5 pcs)
Length dividers, ordered separately (quantity/drawer)	-	V-012 (1 pcs)	V-012 (3 pcs)	V-0456 (1 pcs)	V-0456 (5 pcs)	V-078 (3 pcs)	V-012 (1 pcs) V-0456 (1 pcs) V-0456 (5 pcs)
Code	290-3	291-3	292-3	294-3	296-3	297-3	290C-3

Spacemisers for small-parts storage cabinets



Perfect for storage and identification of thousands of small components in retail, manufacturing, workshops and warehousing. A storage spacemiser holds 12 small-parts storage cabinets. Owing to its robust base and divider shelf system, the spacemiser retains its cabinets firmly in place and has a load capacity of 400 kg.

Mounted on a ball-bearing base, the unit can be effortlessly rotated for ease of use. This assembly offers storage for up to 4320 different items on a floor area of only 0.25 sqm. The unit is easy to assemble.

Spacemiser 12-550

The assembly holds 12 small-parts storage cabinets from series 550, which must be ordered separately. The unit includes a ball-bearing base and shelves in three layers. The load capacity is 400 kg. The overall dimensions of a completely assembled unit, W x D x H: 500 x 500 x 1730 mm.

Bench top spacemiser PTP-5

The product holds 2 small-parts storage cabinets from series 550 or 290 which must be ordered separately. The unit includes a ball bearing base. The load capacity is 50 kg.

The overall dimensions of a completely assembled unit, W x D x H:

360 x 310 x 300 mm (series 290)

360 x 310 x 560 mm (series 550)

For information on small-parts storage cabinets, see pages 4-5.



Figure 1

- 1 x spacemiser 12-550
- 4 x small-parts storage cabinets 551-3
- 4 x small-parts storage cabinets 554-3
- 4 x small-parts storage cabinets 557-3

Figure 2

- 1 x bench top spacemiser PTP-5
- 2 x small-parts storage cabinets 291-3

Figure 3

- 1 x bench top spacemiser PTP-5
- 2 x small-parts storage cabinets 554-3

Cabinet trolley for small-parts storage cabinets



1 x trolley BT-550B
8 x small-parts storage cabinets 550-3

Series 550

The design combines the use of a charcoal frame, crystal clear drawers and self-adhesive labels within the framework. The frame is made of polypropylene, the shelves are made of galvanised steel and the drawers of polystyrene. Details of series 550 can be found on page 4.

Width: 310 mm
Depth: 180 mm
Height: 550 mm

Type	Number of drawers	Dimensions W x D x H
550	60 pcs	55 x 175 x 37
551	48 pcs	69 x 175 x 37
552	24 pcs	138 x 175 x 37
554	24 pcs	92 x 175 x 59
556	8 pcs	277 x 175 x 59
557	12 pcs	138 x 175 x 81
550C	24 pcs	69 x 175 x 37
	6 pcs	92 x 175 x 59
	2 pcs	277 x 175 x 59

Trolleys are ideal for retail, manufacturing and warehousing providing an efficient storage system for small components. It is easily moved to wherever it is needed. You can build a number of combinations of trolleys to match your needs.

Trolley BT-550B

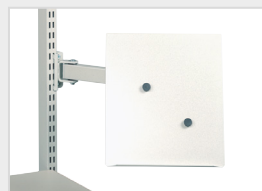
- Double-sided trolley for small-part storage cabinets
- Powder-coated (light grey, RAL 7035) steel frame with a fixed bottom shelf.
- Maximum eight small-parts cabinets, 4 on each side, to be ordered separately
- Height of the fixing rails can be adjusted easily without tools
- Height adjustable ergonomic push handle
- Four swivel castors (ø 100 mm), two with brakes
- Load capacity 300 kg
- External dimensions W x D x H: 780 x 715 x 1600 mm
- Module M750, all the upright tube accessories are available.

Add accessories as needed

Here are some examples of accessories suitable for trolley BT-550B. Please visit our webpage for full range of module M750 accessories.



Tablet bracket



Document holder A4

Storage bin cabinets: series 300 and 400

Storage bin cabinets provide flexible and practical storage for workshops, stores, manufacturing facilities and warehouses. Cabinets can be hung on the wall with screws, stacked on top of each other on the floor or mounted on turntable assemblies. A well-planned storage system saves time and money!

Storage bin cabinets

This product includes a frame, bins and labels with protective shields. Backstops hold the bins when fully extended. The sturdy steel frame has been given a durable powder-coat finish in grey (RAL 7035), and the back of the cabinet includes holes for wall mounting. The bins are of clear polystyrene (PS) or coloured polypropylene (PP). The bins are detailed on pages 12-13.



Bin materials

- PS = Crystal clear polystyrene: temperature tolerance -40 ... +55°C.
- PP = Coloured polypropylene: temperature tolerance -20 ... +75°C. Withstands the effects of oils and most acids and solvents.

Accessories

- Cross dividers, page 8
- Retaining bars, page 9
- Spacemisers, page 9



Series 300 and 400

Colour	Code	Code	Code	Code
Crystal clear	0830-1	1630-1	0840-1	1640-1
Grey	0830-3	1630-3	0840-3	1640-3
Red	0830-5	1630-5	0840-5	1640-5
Blue	0830-6	1630-6	0840-6	1640-6
Includes drawers (type/quantity)	3020 (8 pcs)	3010 (16 pcs)	4020 (8 pcs)	4010 (16 pcs)
Frame				
depth (mm)	300	300	400	400
width (mm)	400	400	400	400
height (mm)	395	395	395	395
Cross dividers, ordered separately (quantity/drawer)	D-20 (4 pcs)	D-10 (4 pcs)	D-20 (6 pcs)	D-10 (6 pcs)

Spacemisers for storage bin cabinets



1 x spacemiser 16-300
8 x storage bin cabinets 0830
8 x storage bin cabinets 1630

1 x spacemiser 16-400
8 x storage bin cabinets 1640
8 x storage bin cabinets 0840

A free-standing spacemiser storage system for stores, production facilities, workshops and warehouses. The spacemiser offers storage for 16 visible storage cabinets. The sturdy, ball-bearing base has a load capacity of 800 kg. These assemblies offer storage for up to 1792 different items on a floor area of only 0.64sqm. Easy to assemble — no tools required.

Spacemiser 16-300

This assembly holds 16 storage bin cabinets from series 300, which must be ordered separately. The unit includes a ball-bearing base and shelves in four layers. The assembly is made of grey powder-coated steel (RAL 7035).

- The overall dimensions of a completely assembled unit, W x D x H: 700 x 700 x 1680 mm.
- Load capacity 800 kg.

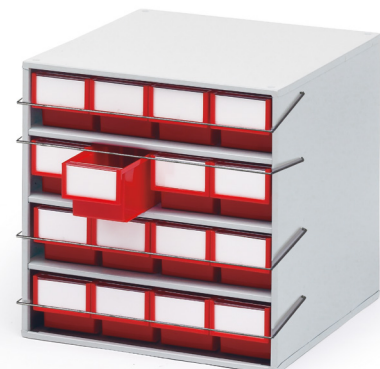
Spacemiser 16-400

This assembly holds 16 storage bin cabinets from series 400, which must be ordered separately. The unit includes a ball-bearing base and shelves in four layers. The assembly is made of grey powder-coated steel (RAL 7035).

- The overall dimensions of a completely assembled unit, W x D x H: 800 x 800 x 1680 mm.
- Load capacity 800 kg.

Retaining bars A 400

Storage bin cabinets are also suitable for use in maintenance vehicles. Retaining bars, to be ordered separately as an accessory, keep the bins in place in a moving vehicle. One set includes 4 pieces. Retaining bars are suitable for models 0830, 1630, 0840 and 1640.



1 x retaining bars A 400
1 x storage bin cabinets 1640-5

High density storage cabinets



High density storage bin cabinets

High density storage cabinets are suitable for the organisation and sorting of large item quantities at production facilities, warehouses, stores and workshops. One cabinet can offer storage for 336 separate items on a floor area of only 0.25 m². If necessary, the cabinets can be equipped with castors or retaining bars.

This product includes a frame, bins and labels with protective shields. Backstops hold the bins when fully extended. Adjustable feet are provided for fine levelling of the cabinet on uneven surfaces. The load capacity of a cabinet is 240 kg, and that of a single shelf is 30 kg. The frame is made of grey powder-coated steel (RAL 7035). Profiled ends and a welded steel construction contribute to the general robustness of the frame. Details on the shelf bins can be found on pages 12 and 13.



	Grey	Red	Blue	Grey	Red	Blue
Code	2440-3	2440-5	2440-6	4840-3	4840-5	4840-6
Includes drawers (type/quantity)	4020 (24 pcs)	4020 (24 pcs)	4020 (24 pcs)	4010 (48 pcs)	4010 (48 pcs)	4010 (48 pcs)
Frame						
depth	410	410	410	410	410	410
width	605	605	605	605	605	605
height	870	870	870	870	870	870
Cross dividers, ordered separately (quantity/drawer)	D-20 (6 pcs)	D-20 (6 pcs)	D-20 (6 pcs)	D-10 (6 pcs)	D-10 (6 pcs)	D-10 (6 pcs)



Castor set PS-LH

Includes 4 castors Ø 100 mm, 2 with brakes, and the required fittings. The load capacity of castors is 150 kg. The overall dimensions of a cabinet on castors are (W x D x H): 605 x 410 x 980 mm.



Retaining bars A-605

Storage bin cabinets are also suitable for use in maintenance vehicles and vessels. Retaining bars keep the bins in place in a mobile application. One set includes 8 pieces. Note! High density storage bin cabinets have no ready-made mounting holes on the back.

Storage bins

1. Storage bins from recycled plastic

Particularly suitable for in-house material flows within factories and warehouses. Material: recycled polypropylene (PP). Standard colour: grey RAL 7023.

2. Containers

Robust containers which meet the stringent requirements for transport and warehousing. They have integral handles and stack securely together. The straight sides allow an economical use of space. Material: recycled polypropylene (PP). Standard colour: grey RAL 7023.

3. Picking bins

All of the inner faces are rounded and the front has a distinctive sloping design which facilitates picking. Bins can be hung on the wall on bin rails, or mounted on workbench bin rails. Material: polystyrene (PS). Standard colour: blue RAL 5015.



4. Bin rail 700

A wall mounting rail for stacking and picking bins. With fixing screws. The load capacity is 50 kg. Length 700 mm. Made of grey epoxy enamelled steel profile. Code 700.



	Code	Colour	External dimensions W x D x H mm	Internal dimensions W x D x H mm	Capacity, litres	Quantity/ package
1	1949-30R	Grey	185 x 490 x 250	145 x 430 x 195	12.1	12
	3149-30R	Grey	310 x 490 x 250	270 x 430 x 195	22.6	12
2	10-18L-30R	Grey	323 x 535 x 150	300 x 480 x 145	18.0	4
	10-36L-30R	Grey	323 x 508 x 280	300 x 480 x 270	36.0	3
3	30-1L-6	Blue	99 x 160 x 70	85 x 100 x 62	1.1	60
	30-2L-6	Blue	198 x 160 x 70	175 x 100 x 62	2.2	30
	30-23L-6	Blue	198 x 160 x 70	175 x 100 x 62 (2 fixed dividers)	2.2	30
4	700	Grey	length 700			

Shelf bins



A label with a protective shield is easy to clean and change when necessary. The shield and label is included.



Corrugated base stops items from sliding on the surface and makes picking up small items easy.



Shelf bins are designed to fit all metric shelving systems.



Shelf bins

Self bins are designed to fit all standard metric shelves, cabinets, paternosters and industrial workstations. Our product range includes 11 bins of different sizes. The depth dimensions are 300, 400, 500 and 600 mm.

Bins of the same width stack securely, even if they are of different lengths. Straight sides ensure an efficient use of space, and the bins are available in several bright colours to facilitate product identification. You can see the contents clearly through the transparent bins. Each drawer comes with a label and protective cover.

Accessories

- Cross dividers
- Blanking piece FP6M provides a smooth surface for a barcode label at the rear of the bin.

Materials

- PS = Crystal clear polystyrene: temperature tolerance -40 ... +55°C.
- PP = Coloured polypropylene: temperature tolerance -20 ... +75°C. Withstands the effects of oils and most acids and solvents.



Individual bins can be sub-divided internally using dividers. Dividers are ordered separately.



Space is reserved for labels on the rear surface of drawers and on dividers. Labels are ordered separately.



Adhesive barcode labels can be affixed to the smooth sides of the dividers. A blanking piece, FP-6 M, can be installed to create a flat surface on the back of the bin for adhesive barcode labels. Blanking piece is ordered separately.

Shelf bins

Accessories

	Material*	External dimensions W x D x H mm	Internal dimensions W x D x H mm	Colour	Capacity, litres	Quantity/ package	Code	Cross divider	Max. amount/ drawer
	PS	92 x 300 x 82	75 x 257 x 70	Crystal clear	1.3	30	3010-1	D-10	4 pcs.
	PP			Grey			3010-3		
	PP			Red			3010-5		
	PP	92 x 400 x 82	75 x 357 x 70	Blue	1.9	30	4010-1	D-10	6 pcs.
	PS			Crystal clear			4010-3		
	PP			Grey			4010-5		
	PP	92 x 500 x 82	75 x 457 x 70	Red	2.4	30	5010-1	D-10	8 pcs.
	PS			Crystal clear			5010-3		
	PP			Grey			5010-5		
	PP	132 x 300 x 100	110 x 257 x 90	Blue	2.5	30	3015-1	D-15	4 pcs.
	PS			Crystal clear			3015-3		
	PP			Grey			3015-5		
	PP			Red			3015-6		
	PP	132 x 400 x 100	110 x 357 x 90	Blue	3.2	20	4015-1	D-15	6 pcs.
	PS			Crystal clear			4015-3		
	PP			Grey			4015-5		
	PP			Red			4015-6		
	PP	132 x 500 x 100	110 x 457 x 90	Blue	4.5	20	5015-3	D-15	8 pcs.
	PS			Crystal clear			5015-5		
	PP			Grey			5015-6		
	PP			Red			5015-6		
	PP	132 x 600 x 100	110 x 557 x 90	Blue	5.5	15	6015-3	D-15	10 pcs.
	PS			Crystal clear			6015-5		
	PP			Grey			6015-6		
	PP			Red			6015-6		
	PP	186 x 300 x 82	167 x 257 x 70	Blue	3.0	15	3020-1	D-20	4 pcs.
	PS			Crystal clear			3020-3		
	PP			Grey			3020-5		
	PP			Red			3020-6		
	PP	186 x 400 x 82	167 x 357 x 70	Blue	4.2	15	4020-1	D-20	6 pcs.
	PS			Crystal clear			4020-3		
	PP			Grey			4020-5		
	PP			Red			4020-6		
	PP	186 x 500 x 82	167 x 457 x 70	Blue	5.3	15	5020-1	D-20	8 pcs.
	PS			Crystal clear			5020-3		
	PP			Grey			5020-5		
	PP			Red			5020-6		
	PP	186 x 600 x 82	167 x 557 x 70	Blue	6.5	15	6020-1	D-20	10 pcs.
	PS			Crystal clear			6020-3		
	PP			Grey			6020-5		
	PP			Red			6020-6		

*) Materials: PS = polystyrene, PP = polypropylene



Crystal clear



Grey, RAL 7016



Red, RAL 3020



Blue, RAL 5015

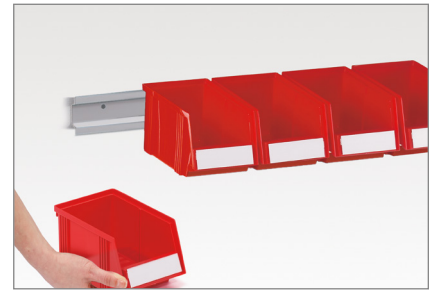
Stacking bins



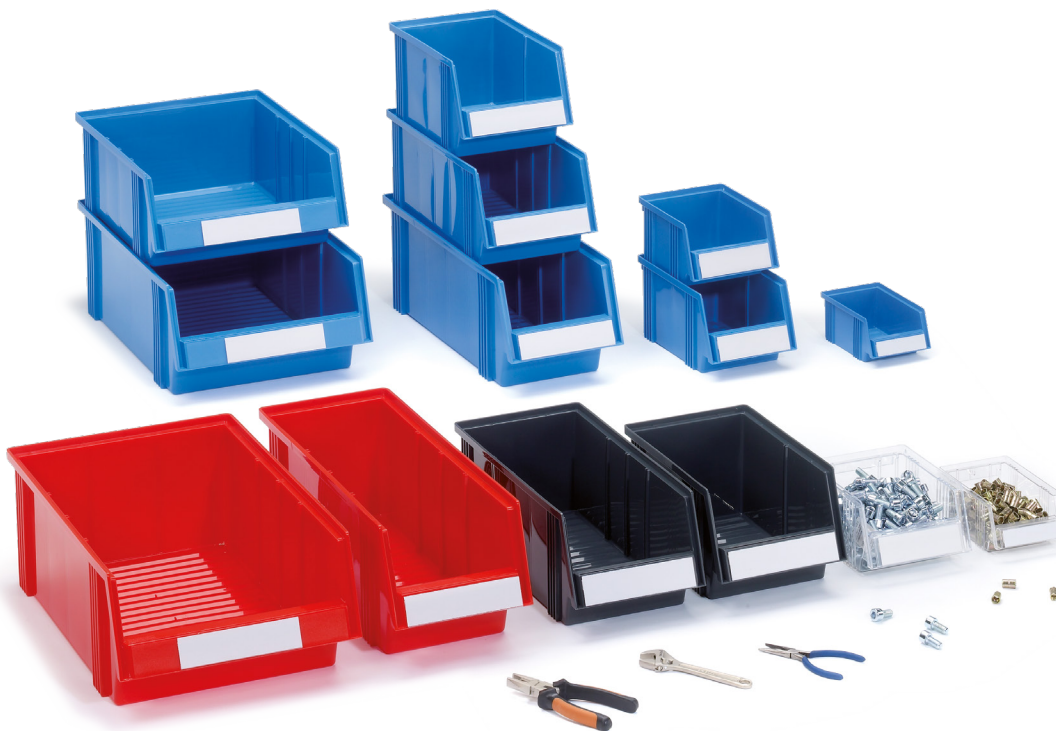
The design, with a half-open front, allows excellent visibility and easy access to the bin's contents, making it easy to pick from.



A corrugated base stops items from sliding around on the surface and makes picking them up easier.



Bin rail 700 for stacking and picking bins. Includes screws for wall mounting. The load capacity is 50 kg. Length 700 mm. Made of grey epoxy enamelled steel profile. Stacking bins 1015 - 1930 are all suitable. Ordered separately.



Stacking bins

Our stacking bins have been designed for daily use in stores, production facilities and warehouses. Our product range includes 8 bins of different sizes. These bins have been designed to fit all standard metric shelves, paternosters and industrial workstations. Bins of the same width stack securely, even if they are of different lengths. Straight sides ensure an efficient use of space.

The colour options allow a storage system to be designed to meet the customer's requirements. The crystal clear bins are transparent, allowing easy visual identification. Bright colours make finding the right item easy.

Accessories

- Cross dividers of steel in a grey, powder-coated finish (RAL 7035).
- Labels and protective covers, self-adhesive.
- Drawer rail 700.

Materials

- PS = Crystal clear polystyrene: temperature tolerance -40 ... +55°C.
- PP = Coloured polypropylene: temperature tolerance -20 ... +75°C. Withstands the effects of oils and most acids and solvents.



A label with a self-adhesive protective shield is affixed to the front plate of the bin. Such labels are easy to change when necessary. Labels must be ordered separately.











Individual bins can be sub-divided internally using dividers. Steel dividers are powder-coated in a grey finish (RAL 7035). Dividers are ordered separately.



Self-adhesive barcodes can be affixed to the front plate and dividers of a bin.

Stacking bins

Accessories

	Material *	External dimensions W x D x H mm	Internal dimensions W x D x H mm	Colour	Capacity, litres	Quantity/ package	Code.	Cross divider	Max. amount/ drawer	Label + cover
	PS PP PP PP	105 x 165 x 75	90 x 105 x 65	Crystal clear Grey Red Blue	0.6	60	1015-1 1015-3 1015-5 1015-6	—	—	E-10
	PS PP PP PP	149 x 192 x 105	125 x 130 x 90	Crystal clear Grey Red Blue	1.5	45	1520-1 1520-3 1520-5 1520-6	—	—	E-15
	PS PP PP PP	149 x 250 x 130	125 x 185 x 115	Crystal clear Grey Red Blue	2.7	30	1525-1 1525-3 1525-5 1525-6	V-14	1 pc.	E-15
	PS PP PP PP	186 x 300 x 156	155 x 230 x 140	Crystal clear Grey Red Blue	5.0	24	1930-1 1930-3 1930-5 1930-6	V-19	1 pcs	E-20
	PS PP PP PP	186 x 400 x 156	155 x 330 x 140	Crystal clear Grey Red Blue	7.2	24	1940-1 1940-3 1940-5 1940-6	V-19	3 pcs	E-20
	PS PP PP PP	186 x 500 x 182	145 x 400 x 165	Crystal clear Grey Red Blue	9.6	12	1950-1 1950-3 1950-5 1950-6	V-195	3 pcs.	E-20
	PP PP PP	310 x 400 x 156	270 x 315 x 140	Grey Red Blue	11.9	12	3040-3 3040-5 3040-6	V-30	3 pcs.	E-20
	PP PP PP	310 x 500 x 182	270 x 400 x 165	Grey Red Blue	17.8	8	3050-3 3050-5 3050-6	V-30	3 pcs.	E-20

*) Materials: PS = polystyrene, PP = polypropylene



Crystal clear



Grey, RAL 7016

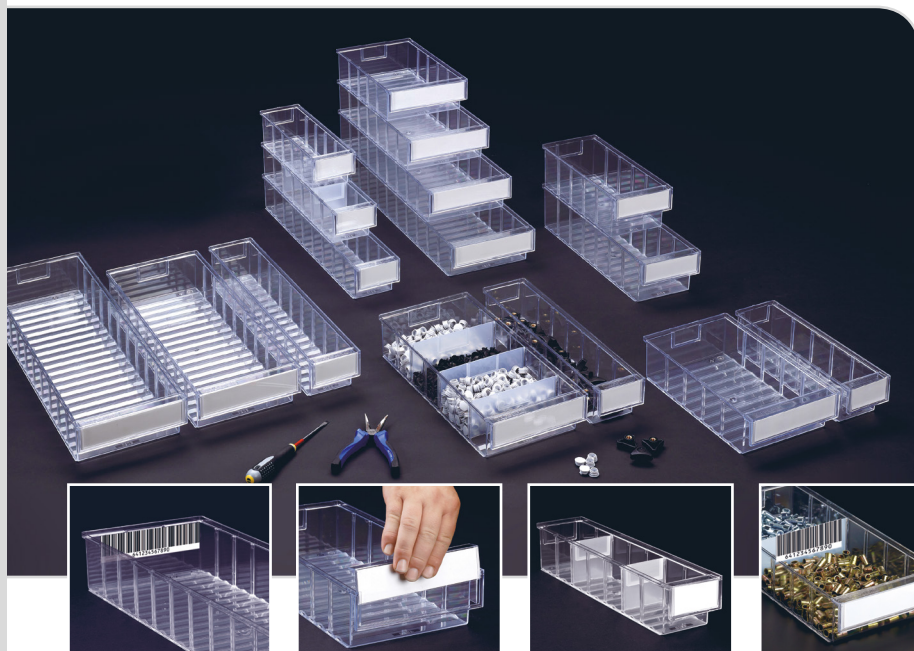


Red, RAL 3020



Blue, RAL 5015

Transparent shelf bins



Shelf bins

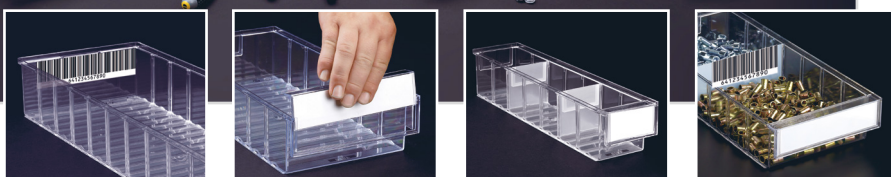
- Crystal clear bins allow visible identification of bin contents.

Accessories

- Cross dividers
- Labels with protective covers.
- Blanking pieces for affixing a self-adhesive barcode.

Materials

- Crystal clear polystyrene (PS) drawers and dividers.



Accessories

	External dimensions W x D x H mm	Internal dimensions W x D x H mm	Capacity, litres	Quantity/ package	Code	Cross divider	Max. amount/ drawer	Label	Label + cover
Shelf bins, including labels and covers	92 x 300 x 82	75 x 257 x 70	1.3	30	3010-1	D-10	4 pcs.	1868	S-10M
	92 x 400 x 82	75 x 357 x 70	1.9	30	4010-1	D-10	6 pcs.	1868	S-10M
	92 x 500 x 82	75 x 457 x 70	2.4	30	5010-1	D-10	8 pcs.	1868	S-10M
	132 x 300 x 100	110 x 257 x 90	2.5	30	3015-1	D-15	4 pcs.	3532	S-15M
	132 x 400 x 100	110 x 357 x 90	3.2	20	4015-1	D-15	6 pcs.	3532	S-15M
	186 x 300 x 82	167 x 257 x 70	3.0	15	3020-1	D-20	4 pcs.	1123	S-20M
	186 x 400 x 82	167 x 357 x 70	4.2	15	4020-1	D-20	6 pcs.	1123	S-20M
	186 x 500 x 82	167 x 457 x 70	5.3	15	5020-1	D-20	8 pcs.	1123	S-20M
	186 x 600 x 82	167 x 557 x 70	6.5	15	6020-1	D-20	10 pcs.	1123	S-20M
Dividers					D-10 D-15 D-20	The dividers are equally compatible with paper labels and self-adhesive barcodes. Each divider has an opening for labels, one of the sides having a smooth surface which can accommodate a self-adhesive barcode.		1792 1792 1792	
Blanking piece	If a self-adhesive barcode is used, the opening for labels, located on the back of a drawer, must be covered with a blanking piece.				FP6M				

Transparent stacking bins

Stacking bins

- The open fronted design allows excellent visibility and easy access to bin contents, making it easy to pick up items. Material: polystyrene (PS). Accessories: cross dividers of steel in a grey, powder-coated finish (RAL 7035); labels with protective covers.

Small drawers

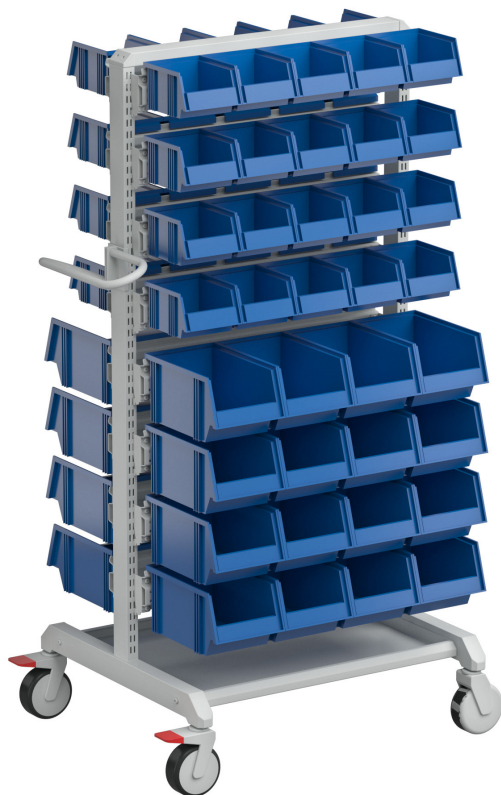
- Crystal clear drawers come as standard with self-adhesive labels. Cross and length dividers are available as an accessory. The drawers and their dividers are made of crystal clear polystyrene (PS).



Accessories

	External dimensions W x D x H mm	Internal dimensions W x D x H mm	Capacity, litres	Qty/ pkg	Code	Cross divider	Max. amount/ drawer	Length divider	Max. amount/ drawer	Label + cover
Stacking bins	105 x 165 x 75	90 x 105 x 65	0.6	60	1015-1	-	-	-	-	E-10
	149 x 192 x 105	125 x 130 x 90	1.5	45	1520-1	-	-	-	-	E-15
	149 x 250 x 130	125 x 185 x 115	2.7	30	1525-1	V-14	1 pc.	-	-	E-15
	186 x 300 x 156	155 x 230 x 140	5.0	24	1930-1	V-19	1 pcs	-	-	E-20
	186 x 400 x 156	155 x 330 x 140	7.2	24	1940-1	V-19	3 pcs	-	-	E-20
	186 x 500 x 182	145 x 400 x 165	9.6	12	1950-1	V-195	3 pcs.	-	-	E-20
	55 x 175 x 37	47 x 146 x 32	0.2	120	L-00	V-00	5 pcs	-	-	
Small drawers, including a self-adhesive label 	69 x 175 x 37	61 x 146 x 32	0.3	96	L-01	V-01	5 pcs	V-012	1 pcs	
	138 x 175 x 37	128 x 146 x 32	0.6	48	L-02	V-02	5 pcs	V-012	3 pcs	
	92 x 175 x 59	82 x 146 x 55	0.7	45	L-04	V-04	5 pcs	V-0456	1 pcs	
	277 x 175 x 59	266 x 146 x 55	2.1	15	L-06	V-06	5 pcs	V-0456	5 pcs	
	138 x 175 x 81	128 x 146 x 74	1.4	24	L-07	V-07	5 pcs	V-078	3 pcs	

Stacking bin **trolley**



1 x trolley BT-170B
40 x blue stacking bin 1520-6
32 x blue stacking bin 1930-6

A storage system for stores, production facilities and warehouses. It is easily moved to wherever it is needed. You can configure the trolley to match your needs.

Trolley BT-170B

- Double-sided trolley for stacking bins
- Powder-coated (light grey, RAL 7035), steel-frame trolley with a fixed bottom shelf
- Up to 112 stacking bins can be attached to one trolley, must be ordered separately
- Four different sizes of stacking bins to choose from
- Height adjustable ergonomic push handle
- Sixteen step-by-step height adjustable bin rails, eight bin rails per side, length of bin rails 742mm
- Height of the bin rails can be adjusted easily without tools
- Four swivel castors (ø 100 mm), two with brakes
- Load capacity for bin rail 50 kg, for trolley 300 kg
- External dimensions W x D x H: 780 x 715 x 1630 mm
- Module M750, all the upright tube accessories are available

Suitability

Stacking bin	Quantity/rail	Max. quantity/stand
1015	7 pcs	112 pcs
1520	5 pcs	80 pcs
1525	5 pcs	80 pcs
1930	4 pcs	64 pcs

Add accessories as needed

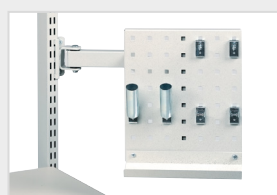
Here are some examples of accessories suitable for trolley BT-170B. Please visit our webpage for full range of module M750 accessories.



Bottle holder Ø 100



Equipment tray



Tool panel

Stacking bin racks



1 x stacking bin rack BR-2530,
35 x red stacking bin 1930-5



1 x stacking bin rack BR-4050,
30 x grey stacking bin 1940-3

Bin rack BR-2530

On BR racks, stacking bins are inclined at a 20-degree angle, enabling the excellent presentation of products. They offer an efficient storage system for daily use when small components are required frequently. This product includes a grey steel frame in an epoxy powder-coated finish and seven fixed, forward-sloping storage levels, 930 mm in width. Stacking bins must be ordered separately.

Load capacity 50 kg per level and 350 kg per rack.
Overall dimensions W x D x H: 990 x 500 x 1540 mm.

Suitability

Stacking bin	Quantity/rail pair	Max. quantity/rack
1525	6 pcs	42 pcs
1930	5 pcs	35 pcs

Bin rack BR-4050

This product includes a grey steel frame in an epoxy powder-coated finish and six fixed, forward-sloping storage levels, 930 mm in width. Stacking bins must be ordered separately.

Load capacity 50 kg per level and 350 kg per rack.
Overall dimensions W x D x H: 990 x 600 x 1670 mm.

Suitability

Stacking bin	Quantity/rail pair	Max. quantity/rack
1940	5 pcs	30 pcs
1950	5 pcs	30 pcs
3040	3 pcs	18 pcs
3050	3 pcs	18 pcs

Gravity flow rack DBS-808

This rack is suitable for retail, manufacturing and warehousing. On a two-bin gravity flow rack, loading and unloading takes place on opposite sides of the rack. Items are picked up from the front bin. Through the force of gravity, the rearmost bin slides all the way down to the front edge of the rack once the empty bin is removed. This product includes a grey steel frame in an epoxy powder-coated finish and six detachable, steel shelves, positioned at an angle. The shelf height and gradient are adjustable. Adjustable feet are provided for fine levelling of the rack on uneven surfaces. Easy to install. The rack holds 48 stacking bins from series 1940, to be ordered separately.

Load capacity is 70 kg per shelf and 420 kg per rack.

Shelf dimensions: 755 x 700 mm.

Overall dimensions W x D x H: 830 x 825 x 1650 mm

Castor set is available.



1 x gravity flow rack DBS-808,
48 x stacking bins 1940-6

ESD protective storage systems

ESD protection

While we move and work, we continuously generate static electricity. If we touch a conductive object while being electrically charged, we cause the charge to be discharged into the object, creating an "electric shock". This phenomenon is known as an ESD (= Electro Static Discharge). If this electric charge is discharged into components, component boards or device connectors, the minimum result will be hidden ESD damage. In many cases, such damage occurs without our noticing it, because humans do not sense discharges weaker than 3000 V; a discharge must be at least 5000 V to be discernible as a spark. The most sensitive components can be damaged at voltages as low as 30 V, and many commonly used components are susceptible to voltages of 100-200 V. Problems caused by static electricity often remain hidden, and cannot be detected by the naked eye.

Within the electronics industry, ESD has been found to be a major factor in reducing product reliability. Problems concerning products only become apparent over time.

ESD protection includes

- ESD-protected workstations, storage space and means of transport and production.
- ESD-protected clothing, shoes and bracelets.
- Training of personnel, provision of work instructions and due attention to quality control.
- Ensuring that all ESD-protected tools and workstations remain clean, since dirt and dust act as an insulator.
- Commitment to continuous improvement of ESD-protection.

Maintaining an unbroken protective ESD protective chain is essential to product quality. Employees must be provided with the necessary prerequisites allowing them to follow proper procedures in an ESD-protected work environment.



Small parts storage cabinets: series 290/550



Series 290/550

Our product range features four different, small parts storage cabinets for ESD-protected storage of sensitive components. The style of these storage cabinets represents the latest in industrial design. These cabinets can be wall hung, mounted on turntables, or stood on a work top. Two frames of different heights are available, 290 and 550 mm.

A storage cabinet consists of a frame, shelves, small drawers and labels. The frame is made of semiconductive polypropylene (PP), the drawers of semiconductive polystyrene (PS), and the shelves of galvanised steel. Small drawers are detailed on page 26. Cabinets come as standard with a connector for a ground-connection cord (not provided). Accessories: cross dividers made of semiconductive polystyrene (PS).



Contains cabinets (quantity x type)	24 x L-61-4ESD	12 x L-64-4ESD	48 x L-61-4ESD	24 x L-64-4ESD
Cabinet dimensions W x D x H	69 x 170 x 40 mm	92 x 170 x 62 mm	69 x 170 x 40 mm	92 x 170 x 62 mm
Frame dimensions W x D x H	310 x 180 x 290 mm	310 x 180 x 290 mm	310 x 180 x 550 mm	310 x 180 x 550 mm
Cross dividers, ordered separately (quantity/drawer)	V-1-4ESD (5 pcs)	V-4-4ESD (5 pcs)	V-1-4ESD (5 pcs)	V-4-4ESD (5 pcs)
Order code	291-4ESD	294-4ESD	551-4ESD	554-4ESD

Spacemisers for small parts storage cabinets



Thousands of sensitive components and other parts can be kept in proper order using an ESD-protected spacemiser. The assembly holds 12 small parts storage cabinets.

Owing to its robust base and divider shelf system, the spacemiser retains its cabinets firmly in place and has a load capacity of 400 kg. Mounted on a ball-bearing base, the unit can be effortlessly rotated for ease of use. A single assembly can offer storage for up to 3456 different items on a floor area of only 0.25 sqm. Earthing via a 1 megaohm protective resistor. The unit is easy to assemble.

Spacemiser 12-550 ESD

- This assembly holds 12 storage cabinets from series 551/554 ESD (ordered separately).
- This unit includes a ball-bearing base, shelves in three layers and a lid.
- Load capacity 400 kg
- Dimensions W x D x H: 500 x 500 x 1730 mm
- Ground-connection cord included.



Bench top spacemiser PTP-5 ESD

This unit holds two small parts storage cabinets, 290 mm or 550 mm in height, with their backs facing each other — cabinets must be ordered separately. The assembly comprises a ball-bearing base and a bottom plate. Includes a ground-connection cord. Load capacity 50 kg.

The overall dimensions of a completely assembled unit, W x D x H:

360 x 310 x 300 mm (291/294 ESD)

360 x 310 x 560 mm (551/554 ESD)

Cabinet trolley for storage cabinets



Trolley BT-550B ESD

- Double-sided ESD-protected trolley for small-part storage cabinets
- Steel frame and fixed bottom shelf powder-coated with a semiconductive ESD paint (light grey, RAL 7035).
- Maximum eight small-parts cabinets, 4 on each side, to be ordered separately
- Height of the fixing rails can be adjusted easily without tools
- Height adjustable ergonomic push handle
- Four swivel ESD-casters (ø 100 mm), two with brakes.
- Load capacity 300 kg
- External dimensions W x D x H: 780 x 715 x 1600 mm
- Module M750, all the upright tube accessories are available

Suitability

Type	Number of drawers	Dimensions W x D x H
551-4ESD	48 pcs	69 x 170 x 40
554-4ESD	24 pcs	92 x 170 x 62

Add accessories as needed

Here are some examples of accessories suitable for trolley BT-550B ESD. Please visit our webpage for full range of module M750 accessories.



LCD bracket and adapter set



Laptop/printer shelf with arm

Storage bin cabinets



Designed for the electronics industry. These cabinets can be wall hung or mounted on turntables, or stood on a work top. This product is available in two depths, 300 and 400 mm.

This product includes a frame, bins and labels with protective shields. The steel frame has a semiconductive ESD powder-coat finish in grey, the bins are of semiconductive polypropylene (PP). Backstops hold the bins when fully extended. Details on the shelf bins can be found on page 26. Cabinets come with a connector for a ground-connection cord as standard. Accessories: cross dividers made of semiconductive polypropylene (PP).



Contains bins (quantity x type)	8 x 3020-4ESD	16 x 3010-4ESD	8 x 4020-4ESD	16 x 4010-4ESD
Bin dimensions W x D x H	186 x 300 x 82 mm	92 x 300 x 82 mm	186 x 400 x 82 mm	92 x 400 x 82 mm
Frame dimensions W x D x H	400 x 300 x 395 mm	400 x 300 x 395 mm	400 x 400 x 395 mm	400 x 400 x 395 mm
Cross dividers, ordered separately (quantity/drawer)	D-20-4ESD (4 pcs)	D-10-4ESD (4 pcs)	D-20-4ESD (6 pcs)	D-10-4ESD (6 pcs)
Code no.	0830 ESD	1630 ESD	0840 ESD	1640 ESD

Spacemisers for storage bin cabinets



A free-standing spacemiser storage system for the electronics industry. The robust, ball-bearing base has a load capacity of 800kg. These assemblies offer storage for up to 1792 different items on a floor area of only 0.64sqm. The unit includes a ball-bearing base and shelves in 4 layers. Earthing via a 1 megaohm protective resistor. Easy to assemble — no tools required.

16-300 ESD

- This unit holds 16 storage bin cabinets from series 0830/1630 ESD (ordered separately).
- The overall dimensions of a completely assembled unit, W x D x H: 700 x 700 x 1680 mm.

16-400 ESD

- This unit holds 16 storage bin cabinets from series 0840/1640 ESD (ordered separately).
- The overall dimensions of a completely assembled unit, W x D x H: 800 x 800 x 1680 mm.

High density storage cabinets

High density storage cabinets provide a lot of ESD-protected storage in a very small foot print. These cabinets can be equipped with castors when necessary.

This product includes a frame, bins and labels with protective shields. The steel frame has a semiconductive ESD powder-coat finish in light grey (RAL 7035). The shelves are made of galvanised steel and the bins of semiconductive polypropylene (PP). Backstops hold the bins when fully extended. Adjustable feet are provided for fine levelling of the cabinet on uneven surfaces. The load capacity of a cabinet is 240 kg and a single shelf is 30 kg. Earthing via a 1 megaohm protective resistor. Cabinet dimensions can be found on page 26. Accessories: cross dividers and a castor set.



2440 ESD

4840 ESD

2440 ESD

- Contains 24 shelf bins, type 4020-4ESD
- Bin dimensions W x D x H: 186 x 400 x 82 mm
- Frame dimensions W x D x H: 605 x 410 x 870 mm
- Divider D-20-4ESD as a accessory

4840 ESD

- Contains 48 shelf bins, type 4010-4ESD
- Bin dimensions W x D x H: 92 x 400 x 82 mm
- Frame dimensions W x D x H: 605 x 410 x 870 mm
- Divider D-10-4ESD as a accessory

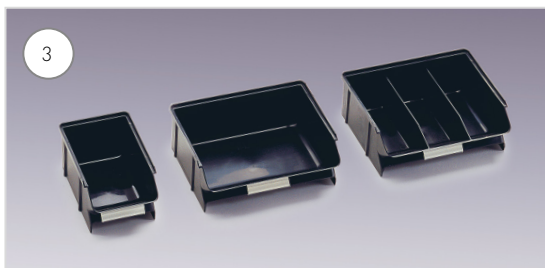
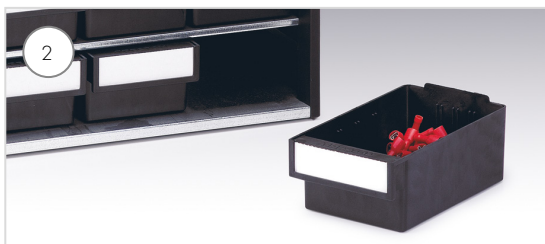
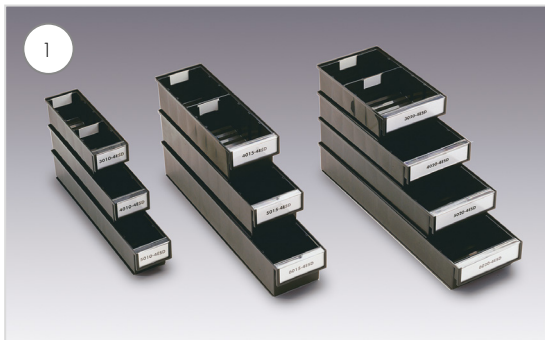
Castor set PS-LH ESD

- 4 castors Ø 100 mm, 2 of which are conductive and 2 have brakes
- The load capacity is 150 kg
- Height with castors 980 mm.



2440 ESD + PS-LH ESD

ESD bins



1. Shelf bins

Made of semiconductive polypropylene (PP). A full-width label with a protective shield is easy to keep clean and change when necessary — such shields and labels are not conductive.

Code	External dimensions W x D x H mm	Capacity, litres	Quantity, package	Cross divider (ordered separately)
3010-4ESD	92 x 300 x 82	1,3	30	D-10-4ESD
4010-4ESD	92 x 400 x 82	1,9	30	D-10-4ESD
5010-4ESD	92 x 500 x 82	2,4	30	D-10-4ESD
4015-4ESD	132 x 400 x 100	3,2	20	D-15-4ESD
5015-4ESD	132 x 500 x 100	4,5	20	D-15-4ESD
6015-4ESD	132 x 600 x 100	5,5	15	D-15-4ESD
3020-4ESD	186 x 300 x 82	3,0	15	D-20-4ESD
4020-4ESD	186 x 400 x 82	4,2	15	D-20-4ESD
5020-4ESD	186 x 500 x 82	5,3	15	D-20-4ESD
6020-4ESD	186 x 600 x 82	6,5	15	D-20-4ESD

2. Small drawers

Made of semiconductive polystyrene (PS). A spare part for small parts storage cabinets; see page 21.

Code	External dimensions W x D x H mm	Capacity, litres	Quantity, package	Cross divider (ordered separately)
L-61-4ESD	69 x 170 x 40	0.2	96	V-1-4ESD
L-64-4ESD	92 x 170 x 62	0.7	45	V-4-4ESD

3. Picking bins

Ideal for highly repetitive picking tasks such as typesetting. Made of semiconductive polystyrene (PS).

Code	External dimensions W x D x H mm	Capacity, litres	Quantity, package	Includes
30-1L-4ESD	99 x 160 x 70	1.1	60	
30-2L-4ESD	198 x 160 x 70	2.2	30	
30-23L-4ESD	198 x 160 x 70	2.2	30	2 fixed dividers

4. Storage bins

Ideal for in-house material flows within factories and warehouses. Semiconductive polypropylene (PP).

Code	External dimensions W x D x H mm	Capacity, litres	Quantity, package
1949-4ESD *	185 x 490 x 250	12.0	12
3149-4ESD *	310 x 490 x 250	22.0	12

* Made to order. Request a quotation.

Semiconductive polypropylene = PP

- surface resistance $10^3 \dots 10^6 \Omega$
- volume resistivity $10^3 \dots 10^6 \Omega$
- temperature tolerance $-20 \dots +70^\circ\text{C}$

Semiconductive polystyrene = PS

- surface resistance $10^3 \dots 10^6 \Omega$
- volume resistivity $10^3 \dots 10^6 \Omega$
- temperature tolerance $-40 \dots +55^\circ\text{C}$



*) Made to order. Request a quotation.

5. Stacking bins

Made of semiconductive polypropylene (PP). Dividers coated with a semiconductive ESD paint and labels with protective covers as an accessory. Labels and protective covers are not conductive.

Code	External dimensions W x D x H mm	Capacity, litres	Quantity, package	Cross divider (ordered separately)	Labels + shields (ordered separately)
1015-4ESD	105 x 165 x 75	0.6	60	—	E-10
1520-4ESD	149 x 192 x 105	1.5	45	—	E-15
1525-4ESD	149 x 250 x 130	2.7	30	V-14	E-15
1930-4ESD	186 x 300 x 156	5.0	24	V-19	E-20
1940-4ESD	186 x 400 x 156	7.2	24	V-19	E-20
1950-4ESD*	186 x 510 x 182	9.6	12	V-19S	E-20
3040-4ESD*	310 x 400 x 156	11.9	12	V-30	E-20
3050-4ESD*	310 x 500 x 182	17.8	8	V-30	E-20

6. Containers

Two volumes: 18 and 36 litres. They have integrated handles and stack securely together. Material is semiconductive polystyrene (PS).

Code	External dimensions W x D x H mm	Capacity, litres	Quantity, package
10-18L-4ESD	323 x 535 x 150	18.0	4
10-36L-4ESD	323 x 508 x 280	36.0	3

Stacking bin trolley

Trolley BT-170B ESD

- Double-sided ESD-protected trolley for stacking bins
- Steel frame and fixed bottom shelf powder-coated with a semiconductive ESD paint (light grey, RAL 7035).
- Up to 112 stacking bins can be attached to one trolley, must be ordered separately
- Four different sizes of stacking bins to choose from
- Height adjustable ergonomic push handle
- Sixteen step-by-step height adjustable bin rails, eight bin rails per side, length of bin rails 742mm
- Height of the bin rails can be adjusted easily without tools
- Four swivel ESD-casters (ø 100 mm), two with brakes
- Load capacity for bin rail 50 kg, for trolley 300 kg
- External dimensions W x D x H: 780 x 715 x 1630 mm
- Module M750, all the upright tube accessories are available.

Suitability

Stacking bin	Quantity/rail	Max. quantity/stand
1015	7 pcs	112 pcs
1520	5 pcs	80 pcs
1525	5 pcs	80 pcs
1930	4 pcs	64 pcs



HEADQUARTERS

Treston Oy
Sorakatu 1
FI-20730 Turku
Tel. +358 10 4469 11
Fax +358 10 4469 789
sales@treston.com
www.treston.com

FACTORIES

Treston Oy, Turku plant
Sorakatu 1
FI-20730 Turku
Tel. +358 10 4469 11
Fax +358 10 4469 789
sales@treston.com
www.treston.fi

Treston Oy, Jyväskylä plant
PO Box 33 (Sohlberginkatu 10)
FI-40351 Jyväskylä
Tel. +358 10 4469 11
Fax +358 10 4469 290
sales@treston.com
www.treston.fi

FRANCE

Treston France SARL
Z.A.C. de la Bonne Rencontre
1, voie Gallo Romaine, Quincy-Voisins
77334 Meaux Cedex
Tel. +33 1 64 17 11 11
Fax +33 1 64 17 11 10
infofr@treston.com
www.treston.fr

GERMANY

Treston Deutschland GmbH
Friedrich-Ebert-Damm 143
22047 Hamburg
Tel. +49 40 8816 5022 - 0
Fax +49 40 8816 5022 - 10
info.de@treston.com
www.treston.de

Treston Deutschland GmbH
Niederlassung Raunheim
Frankfurter Straße 101
65479 Raunheim
Tel. +49 6142 992 50
Fax +49 6142 218 75
mail.de@treston.com
www.treston.de

RUSSIA

Treston Russia LLC
197375, Russia, Saint-Petersburg,
Marshala Novikova street 42
Tel. +7 812 677 76 20
info.ru@treston.com
www.treston.ru

SWEDEN

Treston AB
Tumstocksvägen 9 A
187 66 Täby
Tel. +46 8 511 791 60
Fax +46 8 511 797 60
info.se@treston.com
www.treston.se

UNITED KINGDOM

Treston Ltd
Treston House
5b Bone Lane, Newbury
Berkshire, RG14 5SH
Tel. +44 1635 521521
Fax +44 1635 37452
salesuk@treston.com
www.treston.com

USA

Treston, Inc.
156 Bluffs Court
Canton, GA 30114
Tel. +1 770-721-7980
Fax +1 770-720-6584
infousa@treston.com
www.treston.us

Premium partners

BENELUX

Human Workspace BV
Mechelaarstraat 17
4903 RE Oosterhout
Tel. +31 162 454 383
Fax +31 162 434 712
infofen@humanworkspace.nl
www.humanworkspace.nl

NORWAY

Industrimøbler AS
Solheimveien 50
1473 LØRENSKOGP
Tel. +47 22 25 05 00
post@industrimobler.no
www.industrimobler.no

POLAND

Treston Ergona
Armii Krajowej 1B
05-827 Grodzisk Mazowiecki
Tel. +48 604 11 98 64
info@ergona.pl
www.ergona.pl

Treston Global Network



Treston has a long history in professional furniture design and manufacture, and well over three decades of experience in ergonomic workspace development. Our design and manufacturing facilities are located in Finland.

Thanks to our global sales network, you can receive local support and customer service anywhere in the world. We have offices in Europe and North America as well as an extensive network of selected dealers in more than 30 countries.