



Part of Ant Group Ltd

SPLICE TAPES & TOOLS

Splice tapes & tools are used to join component reels together thus reducing the need to reload feeders. Additionally leader tape extenders add extra length to a part reel reducing the wastage of components, hence saving costs.

Using splice tape gives you:

- Increased throughput of pick & place machinery.
- A reduction in downtime through reducing reel changes.
- Decreased component cost by using 100% of the components on a reel.



+44 (0) 1473 836 200



Tape Splice & Tools

OUR EXPERIENCE:

- Over 10 years experience in making leader tape extenders.
- Over 15 leader tape extender styles that are longer than any other company's and have 40 grams (per sq inch to steel) more holding power than any other company.
- We can make custom leader tape extenders per customer request.
- Splice tools are more durable and longer lasting than competitors.
- We supply to pick and place equipment manufacturers Panasonic, Fuji, Manncorp, Sanyo and Samsung.
- Our splice tapes run on the following pick and place machines: Fuji, Panasonic, Mydata, Philips, Sanyo, Samsung, Quad, Juki, etc.
- Over 25 years experience with SMT Feeders and SMD Carrier tapes.

Splicing Tool Solution

FEATURES:

- Convenient
- Ergonomically designed
- Easy to use
- Durable steel construction
- Excellent durability
- Increased productivity through automation



PRODUCT CODE:	DESCRIPTION:	SIZE:	ADDITIONAL NOTES:
029-1051	SMD Splice Cart	-	Each

Splicing Tool & Shims

A durable and simple to use tape splice tool suitable for use with all carrier tapes. For use with splicing shims 029-1003.



PRODUCT CODE:	DESCRIPTION:	SIZE:	ADDITIONAL NOTES:
029-1000	Splicing Tool	-	Each
029-1003	Splicing Shims	-	Pack of 4000

Semi Automatic Splice Tool & Bandolier Shims

Semi Automatic Tape Splice Tool for use with bandolier type shims for increased productivity.

- Stapler design hand tool
- Can be used with all types of SMT material
- Durable / hard wearing steel construction
- Easy to install at docking station (Optional)
- Ergonomically designed handle for comfort
- To be used with Splice Shims 029-1044



PRODUCT CODE:	DESCRIPTION:	SIZE:	ADDITIONAL NOTES:
029-1039	Semi Automatic Splice Tool	-	Each
029-1044	Splicing Shims on Bandolier	-	Pack of 4000



Carrier Cutting Tool

A simple to use carrier tape cutting tool designed for precise cutting, suitable for use on all size carrier tapes. This tool has alignment pins for increased accuracy.



PRODUCT CODE:	DESCRIPTION:	SIZE:	ADDITIONAL NOTES:
029-1002	Carrier Cutting Tool	-	Each



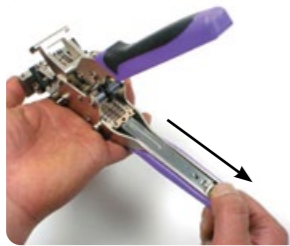
How to Use the Splicing Tool

STEP 1



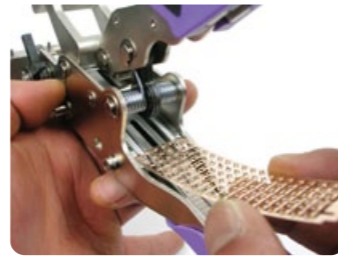
Remove splice clip frame from the pack.

STEP 2



Pull the slider towards the direction of the arrow.

STEP 3



Insert clips into the inside rail. Be careful not to damage / bend the frame.

STEP 4



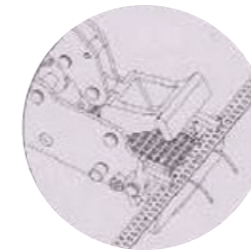
Push the button. When the insert clip is inside the guide rail, insert the clip by lifting avoiding the hooked protrusions.

STEP 5



Confirm clips groove to hook to the gauge pins.

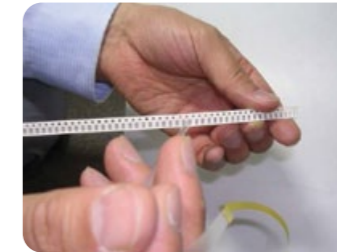
STEP 6



Place the carrier reel tape into the gauge pins, fix the lever and compress.

How to Cut the Reel Material

STEP 1



Peel off the reel cover tape to the first component.

STEP 2



Cut reel using pitch scissor.

Removing the Frame...

STEP 1



Check the final clip position.

STEP 2



After splicing the final clip check the remaining frame. All clips should be used as per the picture. If there are any clips left then extra care should be taken when removing them from the frame.

STEP 3



Push the remaining frame forward and remove the frame. Please note this is particularly sharp and may cut.

STEP 4



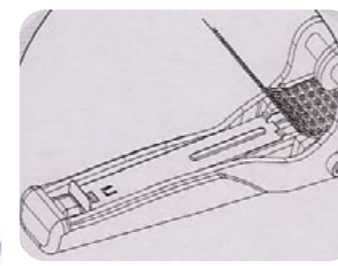
Throw away the remaining frame without clip.

STEP 5



NOTES:
Do not detach clip from tool while the clip is inserted.
Do not splice without reel material.
Do not move slide the slider after inserted frame.

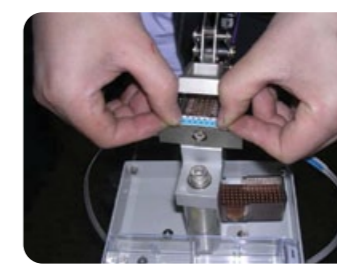
STEP 6



Please be careful when inserting the frame so that it does not bend and ensure the frame is in the correct position.
Please note if the pin & block is disassembled then the warranty will be invalid.

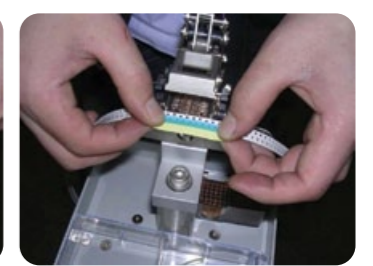
How to Use Splice Tape

STEP 1



Position two ends of the tapes to be joined onto splice tool.

STEP 2



Apply tape connector across joint.

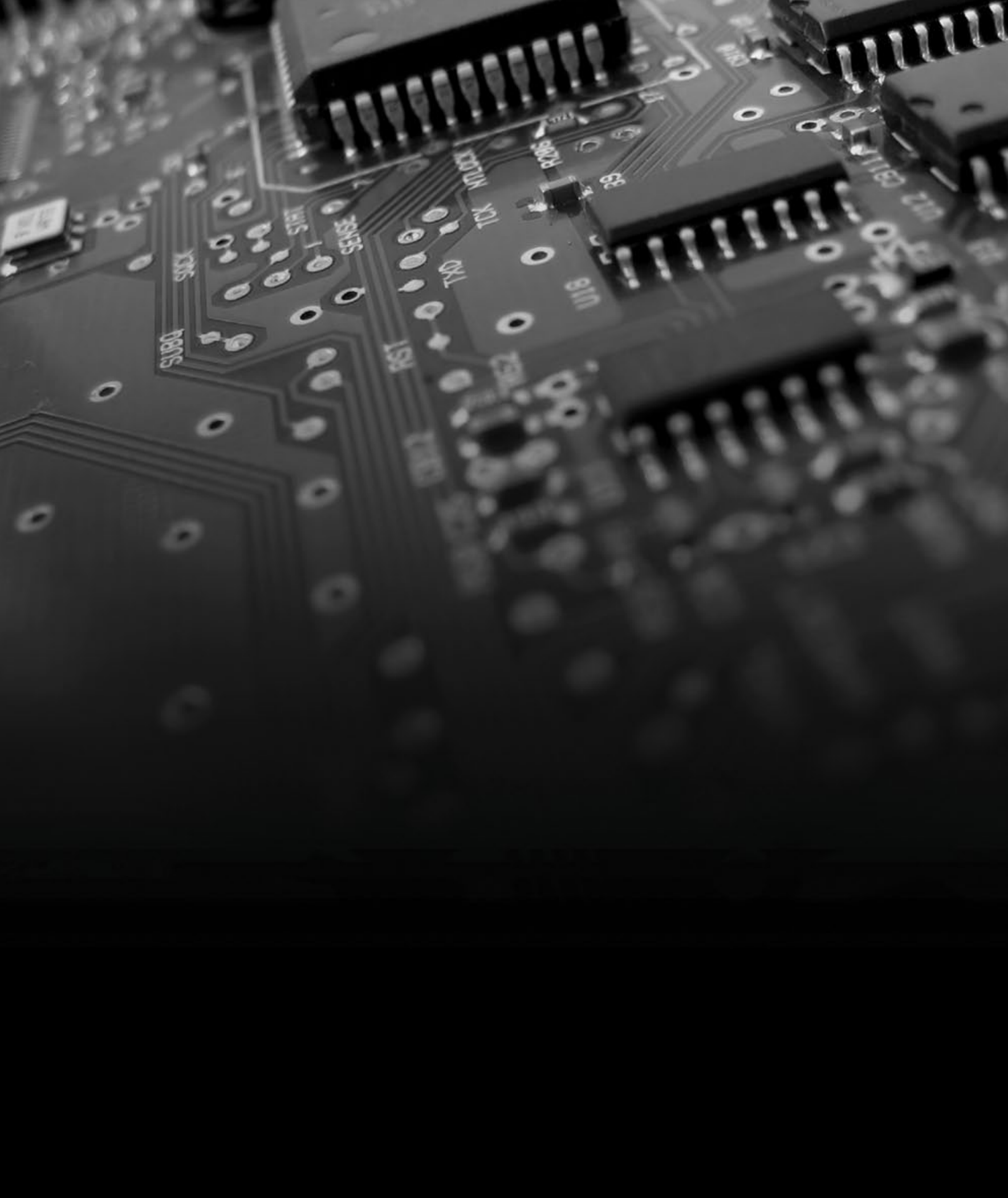


Splice Tape

	PRODUCT CODE:	DESCRIPTION:	SIZE:	ADDITIONAL NOTES:
	029-0014	Single Splice Tape – Black	8mm	Pack of 10
	029-0016	Single Splice Tape – Black	12mm	Pack of 10
	029-0017	Single Splice Tape – Black	16mm	Pack of 10
	029-0019	Single Splice Tape – Black	24mm	Pack of 10
	029-0015	Single Splice Tape – Yellow	12mm	Pack of 10
	029-0007	Single Splice Tape – Yellow	16mm	Pack of 10
	029-0018	Single Splice Tape – Yellow	24mm	Pack of 10
	029-0005	Single Splice Tape – Blue	8mm	Pack of 10
	029-1008	Double Splice Tape – Yellow	8mm	Pack of 500
	029-1009	Double Splice Tape – Yellow	12mm	Pack of 500
	029-1010	Double Splice Tape – Yellow	16mm	Pack of 500
	029-1011	Double Splice Tape – Red	8mm	Pack of 500
	029-1026	Splice Tape with Shim	8mm	Pack of 500
	029-1027	Splice Tape with Shim	12mm	Pack of 500
	029-1028	Splice Tape with Shim	16mm	Pack of 500
	029-1004	Tape Connectors – Red	8mm	Pack of 500
	029-1005	Tape Connectors – Red	12mm	Pack of 500
	029-1006	Tape Connectors – Red	16mm	Pack of 500
	029-1007	Tape Connectors – Red	24mm	Pack of 500
	029-1012	SMD Cover Tape Extenders	8mm	500 pcs
	029-1013	SMD Cover Tape Extenders	12mm	500 pcs
	029-1014	SMD Cover Tape Extenders	16mm	500 pcs
	029-1015	SMD Cover Tape Extenders	24mm	250 pcs
	029-1016	SMD Cover Tape Extenders	32-44mm	250 pcs
	029-1017	SMD Cover Tape Extenders – Double Sided	8mm	500 pcs
	029-1018	SMD Cover Tape Extenders – Double Sided	12mm	500 pcs
	029-1019	SMD Cover Tape Extenders – Double Sided	16mm	500 pcs
	029-1020	SMD Cover Tape Extenders – Double Sided	24mm	250 pcs
	029-1021	SMD Cover Tape Extenders – Double Sided	32-44mm	250 pcs
	029-1022	Flat Punched White Leader Tape	8mm	Pack of 100
	029-1023	Flat Punched White Leader Tape	12mm	Pack of 100
	029-1024	Flat Punched White Leader Tape	16mm	Pack of 100
	029-1025	SMT Joint Tape	-	Pack of 500

PLEASE NOTE: Images for illustrative purposes only

Notes:



Part of Ant Group Ltd

108 Claydon Business Park, Great Blakenham, Ipswich, IP6 0NL, UK
t +44 (0) 1473 836 200 f +44 (0) 1473 836 220 e sales@antistat.co.uk
www.antistat.co.uk

Ant Group comprises of Antistat, Cygna and Cyberpac, all of which are trading divisions of ESD Control Centre Ltd. Registered No. 2526954